



## Blood Type and Nutrition

Featuring Kimberly Balas, PhD, ND and  
Steven Horne, RH(AHG)

---

---

---

---

---

---

---

---

---



## Why is Blood Type Important?

- All organisms are equipped with a system which enables their bodies to identify structures that are part of their organism from structures belonging to other organisms
  - Blood type is one of the most fundamental methods the body utilizes to separate self from not self
  - This is why donated blood has to be compatible
  - This ability to determine what is self and what is not self is at the core of our immune function
- 

---

---

---

---

---

---

---

---



## About Blood Typing

- In 1900, Karl Landsteiner proved that there were four different types of human blood.
  - In 1907, Dr. Jan Jansky noted the four blood types that we know today: A, B, O, AB
  - Research done by Dr. Peter D'Adamo and his father, Dr. James D'Adamo, has demonstrated there was a strong correlation between a person's blood type (O, A, B or AB) and the foods and supplements they need to consume for optimal health.
  - Dr. D'Adamo has widely promoted this concept in several popular books, including *Eat Right for Your Type* and his *Live Right for Your Type*.
- 

---

---

---

---

---

---

---

---



## Determining Your Blood Type

- Simple test kits are available to determine your blood type
- You can also donate blood and ask them what your blood type is when you donate




---

---

---

---

---

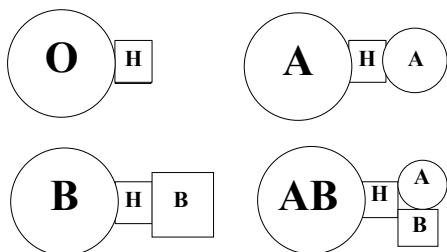
---

---

---



## Blood Type Structures




---

---

---

---

---

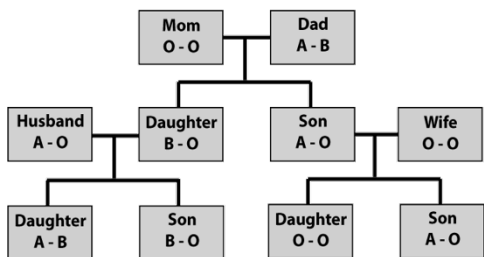
---

---

---



## Genetics




---

---

---

---

---

---

---

---



## Lectins

- Chemicals found in all foods
- Lectins that are incompatible with one's blood type create negative biochemical reactions
- For starters, they cause agglutination of the blood, meaning they make red blood cells "sticky" so they clump together. This results in a reduction in oxygen supply in the body and lowered immunity
- Lectins can also interfere with protein digestion, block hormones, trigger immune reactions and impair absorption
- Understanding which foods contain lectins compatible with the body and which foods contain lectins that are not is the basis of the blood type diet

---

---

---

---

---

---

---

---



## Food Choices

- Beneficial—foods/ supplements act like a medicine
- Neutral—foods/ supplements act like a food
- Avoid—foods/ supplements act like a poison




---

---

---

---

---

---

---

---



## Secretor/Non-Secretor

- Secretors
  - 85% of population
  - Express more of your blood type in your body
  - Wall out the bad guys and kill them outside the body
- Non-secretors
  - Allow germs in and kill them within the blood stream
  - Carries a gene which inhibits them from secreting their ABO blood type in their saliva, semen, etc
  - Distinct link between non-secretors and family histories of alcoholism and diabetes

---

---

---

---

---

---

---

---



## Dietary Compliance

- **Healthy**
  - Over age 55 – 80% compliance
  - Under age 55 – 70%
- **Imbalanced or diseased**
  - 80-90% compliance
- **Desiring weight loss**
  - 100% compliance




---

---

---

---

---

---

---

---



## Blood Type Supplements

- In addition to diet each blood type is prone to a unique set of health challenges
- These can be mediated or eliminated through appropriate herbs and supplements




---

---

---

---

---

---

---

---



## Blood Type O Basics

- Universal donor (can donate blood to all types)
- Carnivorous, hunter-gatherer type
- Oldest and most basic blood type
- Tend to be strong and self-reliant, natural leaders
- Hardy digestive tract
- Strong immune system with natural defenses against infection

---

---

---

---

---

---

---

---

**O Blood Type O**

<p><b>Strengths</b></p> <ul style="list-style-type: none"> <li>• Strong immunity</li> <li>• Strong digestion, break down fats and proteins easily</li> <li>• Handle stress well in the short term</li> <li>• Thinner blood</li> </ul>	<p><b>Weaknesses</b></p> <ul style="list-style-type: none"> <li>• Once overtaxed by stress, they require longer recovery</li> <li>• Can be angry or prone to risky behavior</li> <li>• Can be moody and hyperactive</li> <li>• Poor utilization of carbohydrates</li> </ul>
---	---

---



---

---

---

---

---

---

---

---

**O Blood Type O Diet**

<p><b>Major Avoids</b></p> <ul style="list-style-type: none"> <li>• Grains (corn, wheat)</li> <li>• Dairy products (A-1 Beta Casein)</li> <li>• Beans (kidney, navy, pinto, lentils)</li> <li>• Nuts/Seeds (cashews, peanuts, pistachios)</li> <li>• Fats/Oils (soy oil, corn oil, peanut oil, black olives)</li> <li>• Other (cauliflower, red and white potatoes, oranges, tangerines)</li> </ul>	<p><b>Major Beneficials</b></p> <ul style="list-style-type: none"> <li>• Red Meat (beef (grass-finished), buffalo, lamb, venison)</li> <li>• Fish (sea bass, cod, halibut, snapper, yellowtail)</li> <li>• Beans (adzuki, black-eyed peas)</li> <li>• Nuts/Seeds (flax, pumpkin, walnut)</li> <li>• Fats/Oils (flax, olive)</li> <li>• Other (beet greens, Swiss chard, broccoli, kale, cherries, plums)</li> </ul>
---	---

---



---

---

---

---

---

---

---

---

**O Neurotransmitters**

- Secrete higher levels of catecholamines (dopamine, ephiphierine), which allows them to respond more rapidly to danger
- They also have low levels of MAO, which breaks down catecholamines, which is why they need a longer recovery time from stress
- Issues with these neurotransmitters make them more prone to manic-depressive disorders, bipolar disorder, schizophrenia and ADHD
- L-tyrosine found in red meat (and sprouted wheat) helps balance these neurotransmitters

---



---

---

---

---

---

---

---

---

**O Blood Type O and Stress**

- Produce the least amount of cortisol in response to stress
- Susceptible to prolonged stress - adrenal exhaustion
- Cholesterol usually runs higher

- Anger management techniques
- Intense physical exercise
- Minimize monotony
- Add high CLA proteins to diet

- **CoQ10**
  - Helps lower blood pressure, glucose and triglycerides levels.
  - Helps with sluggish liver. Helps to improve HDL cholesterol by helping to keep LDL cholesterol oxidation inhibited. Helps reduce high serum LDL cholesterol.
  - Antioxidant, which helps to reduce the effects of oxidative stress.
  - Helps with maintenance of optimal cellular function that has been impaired by stress.
  - Crucial for energy metabolism.
- **Licorice Root**
  - Provides adaptogens to nourish adrenals and improve prolonged stress response.
  - Reduces cravings for sugar and carbs (foods that create inflammation and oxidized cholesterol)

---

---

---

---

---

---

---

---

**O Blood Type O**

<b>Health Issues</b>	<b>Important Supplements</b>
<ul style="list-style-type: none"> <li>• <b>Hyperactive Immune System</b> <ul style="list-style-type: none"> <li>• Allergies</li> <li>• Inflammatory conditions</li> <li>• Autoimmune diseases</li> </ul> </li> <li>• Hashimoto's thyroiditis</li> <li>• <b>Mood swings</b> <ul style="list-style-type: none"> <li>• ADHD</li> <li>• Manic-Depressive</li> <li>• Schizophrenia</li> <li>• Parkinson's</li> </ul> </li> </ul>	<ul style="list-style-type: none"> <li>• L-tyrosine</li> <li>• 5-HTP</li> <li>• L-glutamine</li> <li>• B-complex vitamins (especially folic acid)</li> <li>• Trace minerals</li> <li>• Adaptagens</li> <li>• Adrenal Glandular</li> <li>• Larch Tree Bark (arabinogalactin)</li> <li>• Iodine (seaweeds)</li> <li>• Stinging Nettle</li> </ul>

---

---

---

---

---

---

---

---

**A Blood Type A Basics**

- Agrarian blood type, cultivators, more vegetarian (need the right types of proteins)
- Settled, co-operative and orderly
- Adapt well to environmental changes
- Sensitive digestive tracts
- Have more difficulty digesting protein, especially red meat
- More vulnerable to microbial invasion

---

---

---

---

---

---

---

---

## Blood Type A

<b>Strengths</b>	<b>Weaknesses</b>
<ul style="list-style-type: none"> <li>• Adaptive to change</li> <li>• Preserves and metabolizes nutrients</li> <li>• Creative</li> <li>• Co-operative</li> <li>• Domestic</li> <li>• Organized</li> </ul>	<ul style="list-style-type: none"> <li>• Prone to anxiety</li> <li>• Weak digestion</li> <li>• Reduced immunity</li> <li>• Congestion/Stagnation</li> <li>• OCD</li> </ul>

---

---

---

---

---

---

---

---

---

## Cortisol and Stress

- Secrete more cortisol than other blood types giving them a higher base-line stress level
- Also produce more epinephrine in response to stress and has the hardest time breaking it down
- High cortisol contributes to more rapid aging, senility, Alzheimer's and cancer
- This also makes them more prone to anxiety disorders, particularly obsessive-compulsive disorders (OCD). OCD patients show higher levels of cortisol.
- Adaptogens help reduce cortisol levels and can be very beneficial

---

---

---

---

---

---

---

---

---

## Blood Type A Diet

<b>Major Avoids</b>	<b>Major Beneficials</b>
<ul style="list-style-type: none"> <li>• Grain fed Beef</li> <li>• Fish (bass, catfish, grouper, haddock, halibut, oyster, scallop)</li> <li>• Grains (wheat)</li> <li>• Dairy</li> <li>• Nuts/Seeds (Brazil, pistachio)</li> <li>• Other (tomatoes, potatoes, peppers, bananas, oranges)</li> </ul>	<ul style="list-style-type: none"> <li>• Fish (cod, perch, snapper, salmon, sardine, trout)</li> <li>• Grains (amaranth, rye, oat)</li> <li>• Beans (black, pinto, soy, lentils)</li> <li>• Nuts/Seeds (peanut, pumpkin, walnut)</li> <li>• Other (beet greens, broccoli, carrot, onions, Swiss chard, berries, grapefruit, lemon, lime)</li> </ul>

---

---

---

---

---

---

---

---

---

**A Blood Type A and Stress**

- Over responds to minor stress
- Has an increased cortisol in blood
- LDL Inflammatory response usually higher
- Calming exercises (yoga, tai chi)
- Meditation and deep breathing
- Avoid sleep deprivation
- Solitude replenishes

**Adaptagens**

- Nourishes circulatory system and protects from oxidative damage
- Protects the digestive system from the effects of stress
- Helps restore energy levels in an over stressed nervous system

**B-Complex**

- Reduces depletion of nutrients due to high cortisol levels and elevated stress response.
- Strengthens nervous system and resistance to physical effects of stress.
- Controls inflammatory effects of High LDL

---

---

---

---

---

---

---

---

**A Blood Type A Supplements**

<b>Health Issues</b>	<b>Important Supplements</b>
<ul style="list-style-type: none"> <li>• <b>Stress</b> <ul style="list-style-type: none"> <li>• Higher cortisol levels</li> <li>• Difficulty handling stress</li> <li>• Prone to anxiety, OCD</li> </ul> </li> <li>• <b>Weak digestion</b></li> <li>• <b>Immune Issues</b> <ul style="list-style-type: none"> <li>• Asthma and allergies</li> <li>• Ear infections in children</li> <li>• Highest cancer risk</li> </ul> </li> <li>• <b>Thicker blood</b></li> <li>• <b>Insulin resistance</b></li> </ul>	<ul style="list-style-type: none"> <li>• <b>Adaptagens/Adrenals (Eleuthero, licorice, schizandra)</b></li> <li>• <b>B-Complex (B6, B12)</b></li> <li>• <b>Digestive enzymes (HCl)</b></li> <li>• <b>Probiotics</b></li> <li>• <b>Digestive bitters (gentian, goldenseal)</b></li> <li>• <b>Co-Q 10</b></li> </ul>

---

---

---

---

---

---

---

---

**B Blood Type B Basics**

- First appeared in India or the Ural region of Asia among a mix of Caucasian and Mongolian tribes
- Inclined to be nomads
- Balanced, flexible and creative.
- Strong immune systems
- Readily adapt to dietary and environmental changes
- Omnivore type

---

---

---

---

---

---

---

---



## Blood Type B

<b>Strengths</b>	<b>Weaknesses</b>
<ul style="list-style-type: none"> <li>• Strong immune system</li> <li>• Balanced nervous system</li> <li>• Flexible, outgoing</li> <li>• Versatile to dietary change</li> <li>• Good digestion</li> </ul>	<ul style="list-style-type: none"> <li>• Overreactive to stress (hold stress inside)</li> <li>• Difficulty recovering from stress</li> <li>• Lethargy, lack of motivation</li> <li>• Some immune issues with viruses</li> </ul>

---

---

---

---

---

---

---

---

---

## Blood Type B Diet

<b>Major Avoids</b>	<b>Major Beneficials</b>
<ul style="list-style-type: none"> <li>• Meat (chicken, duck, quail, pork)</li> <li>• Seafood (clam, crab, lobster, mussels, shrimp, yellowtail)</li> <li>• Beans (black, garbanzo, lentils, mung, soy)</li> <li>• Nuts/Seeds (peanuts, cashews, pistachio)</li> <li>• Grains (corn, wheat, rye)</li> <li>• Other (olives, tomato)</li> </ul>	<ul style="list-style-type: none"> <li>• Meat (goat, lamb, venison)</li> <li>• Seafood (caviar, cod, halibut, salmon, sardine)</li> <li>• Dairy (organic cow milk, goat milk, cottage cheese, yogurt, feta)</li> <li>• Beans (kidney, lima)</li> <li>• Walnuts</li> <li>• Grains (oat, rice)</li> <li>• Other (beet, cabbage, carrot, peppers, yams, papaya, pineapple)</li> </ul>

---

---

---

---

---

---

---

---

---

## Blood Type B Notes

- Blood type B (and AB) clear nitric oxide faster than other blood types
- Nitric oxide dilates blood vessels to lower blood pressure
- L-arginine is the precursor to nitric oxide
- Both B and O blood types are more intolerant of carbohydrates and require higher protein intake

---

---

---

---

---

---

---

---

---

**B Blood Type B and Stress**

- More emotionally centered
- Sensitive to stress related imbalances
- Respond quickly to stress-reducing techniques
- Triglycerides tend to run higher

- Visualization and relaxation strategies balanced with exercise
- Meditation and deep breathing
- Sleep according to light/dark response
- Avoid rushing – have a schedule

- **Lecithin**
  - Helps balance cholesterol and triglyceride combustion
  - Helps produce healthy bile salts to emulsify fats
  - Reduces blood insulin levels which can damage arteries and cause clots
- **Magnesium**
  - Reduces heart stress and lowers homocysteine levels
  - Reduces inflammatory processes from stress and helps with irregular heartbeat
  - Enables better glyceride combustion and increases cellular energy and endurance

---

---

---

---

---

---

---

---

**B Blood Type B Supplements**

<b>Health Issues</b>	<b>Important Supplements</b>
<ul style="list-style-type: none"> <li>• Immune Issues               <ul style="list-style-type: none"> <li>• Vulnerable to viruses</li> <li>• Autoimmune disorders</li> </ul> </li> <li>• Memory loss (Alzheimer's)</li> <li>• Chronic fatigue</li> <li>• Hyperinsulinemia</li> <li>• High blood pressure</li> <li>• Urinary tract infections</li> </ul>	<ul style="list-style-type: none"> <li>• Ginkgo</li> <li>• Bacopa Leaf</li> <li>• B-Complex</li> <li>• Magnesium</li> <li>• L-arginine</li> <li>• Cranberry/Juniper Berry</li> <li>• Lecithin</li> <li>• Elderberry</li> <li>• Astragalus</li> <li>• Eleuthero</li> <li>• Minerals</li> </ul>

---

---

---

---

---

---

---

---

**AB Blood Type AB Basics**

- Universal Receiver (can receive all other blood types, but can only donate to other ABs)
- Rarest blood type (less than 4% of the population)
- Combines traits of A and B types
- Stronger immune systems
- Tend to be charismatic and mysterious
- Adaptable for modern conditions

---

---

---

---

---

---

---

---

## Blood Type AB

<b>Strengths</b>	<b>Weaknesses</b>
<ul style="list-style-type: none"> <li>• Charismatic</li> <li>• Mysterious</li> <li>• Adaptable to modern conditions</li> </ul>	<ul style="list-style-type: none"> <li>• Overly tolerant immune system</li> <li>• Digestive issues (intestinal)</li> <li>• Tendency to feel alienated from others</li> <li>• Introversion</li> <li>• Problems digesting protein and fat</li> </ul>

---

---

---

---

---

---

---

---

---

## Blood Type AB Diet

<b>Major Avoids</b>	<b>Major Beneficials</b>
<ul style="list-style-type: none"> <li>• Meat (red meat, pork chicken)</li> <li>• Seafood (clam, crab, lobster, shrimp, oyster, yellowtail)</li> <li>• Corn</li> <li>• Nuts/Seeds (sunflower, pumpkin)</li> <li>• Other (banana, orange, peppers)</li> </ul>	<ul style="list-style-type: none"> <li>• Meat (turkey)</li> <li>• Seafood (cod, mackerel, salmon, snapper, tuna)</li> <li>• Grain (amaranth, rice, oat, spelt)</li> <li>• Dairy (goat milk, yogurt, cottage cheese, sour cream)</li> <li>• Nuts/Seeds (peanut, walnut)</li> <li>• Other (grapes, pineapple, beets, kale, eggplant)</li> </ul>

---

---

---

---

---

---

---

---

---

## Blood Type AB and Stress

<ul style="list-style-type: none"> <li>• Stress causes more immediate reaction in inflammation</li> <li>• Sensitive to stress related imbalances more like the A type</li> <li>• Triglycerides tend to run higher</li> </ul>	<ul style="list-style-type: none"> <li>• Diet is extremely important in lowering high glycemic index</li> <li>• Meditation, visualization &amp; deep breathing</li> <li>• Sleep is important to restore balance</li> <li>• Minimize surprise and adrenaline rushes</li> </ul>
<ul style="list-style-type: none"> <li>• <b>Rhodiola</b> <ul style="list-style-type: none"> <li>• Helps with blood quality and supports lymphatic system</li> <li>• Reduces the cell mutations associated with cancer</li> <li>• Helps the body's ability to repair DNA mutations</li> </ul> </li> <li>• <b>L-Arginine</b> <ul style="list-style-type: none"> <li>• Reduces nitric oxide generation</li> <li>• Inhibits proinflammatory cytokines</li> <li>• Lowers blood sugar blood pressure and triglycerides</li> <li>• Decreases oxidative stress;*</li> <li>• Increases blood flow to the extremities</li> </ul> </li> </ul>	

---

---

---

---

---

---

---

---

AB

## Blood Type AB Supplements

**Health Issues**

- Overly tolerant immune system
- Digestive issues
  - Parasites
  - Leaky gut
  - Sensitive digestive systems
  - Prone to colon cancer
- Hypertension
- Blood clots
- Mood disorders like Os

**Important Supplements**

- L-tyrosine
- L-arginine
- Kudzu
- Probiotics
- Rhodiola
- B-complex vitamins
- Alpha lipoic acid
- Yellow Dock
- L-glutamine

---

---

---

---

---

---


---

---

AB

## Blood Typing Kits

- Use to determine a person's blood type
- 1 or more kits - \$16.20
- 6 or more kits - \$12.96 - 20% off
- 12 or more kits - \$9.72 - 40% off
- 10% off for orders placed 2/13-2/29



---

---

---

---

---

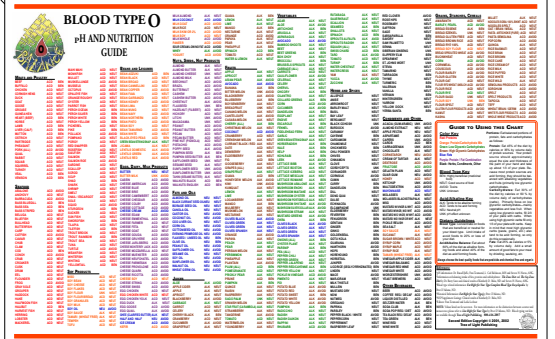
---

---

---

AB

## Blood Type and Nutrition Charts



---

---

---

---

---

---

---

---

